



7800 West County Road 42
Apple Valley, MN 55124
952-432-7273
www.graceofav.org



FOURTH SUNDAY OF EASTER
APRIL 21, 2024
9:30A

Welcome!

If this is your first time at Grace, we invite you to fill out a "connect" card found in the pew rack and give it to an usher or place it in the offering plate.

If you prefer, scan this QR code so we can find out who you are! We look forward to connecting with you!



Children are welcome in worship!

There are two Playgrounds: one in the front of the sanctuary and one in the back gallery. Playgrounds have pint-sized chairs and quiet toys.

Nursery Care

(Ages 0-3 years)
Open 9:15-11:30a
The nursery is available and staffed by an adult. An usher can direct you to the nursery.

Kids Connect

(Age 4 - Grade 3)
Kids exit following Children's Message, and return following the sermon.

The Neighborhood

(Age 4 - Grade 5)
Open 10:40-11:30a
A space for free-play, creativity, and imagination.

WELCOME TO GRACE

Welcome to worship at Grace Lutheran – we are so glad to have you with us this morning! A few pieces of orientation and welcome:

- Large-print bulletins and hymn selections can be found in a red binder as you enter the sanctuary.
- At the entrance to the worship space, kids will find books, crayons, and gadgets to use during worship, as well as children's bulletins.
- There are all-gender restrooms that can be accessed by exiting the sanctuary to the left and following a short hallway.
- If you wish to share a prayer, there are "prayer" cards in the pews. You can hand your card to an usher or leave it in the offering plate as you exit the sanctuary.
- We welcome you just as you are! Grace is a Reconciling in Christ congregation, and we are committed to expanding, growing, and strengthening our welcome.

GOD WELCOMES ALL

PRELUDE *God of the Sparrow* Ashdown

WELCOME

THANKSGIVING FOR BAPTISM

We praise you, O God, for water.
We praise you, O God, for water.

We praise you, O God, for water.
We praise you, O God, for water.

We praise you, O God, for water.
We praise you, O God, for water.

We praise you, O God, for baptism.
We praise you, O God, for baptism.

Amen, and amen.
Amen, and amen.

OPENING SONG *What Is This Place* ELW #524

GREETING AND PRAYER OF THE DAY

The grace of our Lord Jesus Christ, the love of God, and the communion of the Holy Spirit be with you all. **And also with you.**

Creator God, who lifted up the mountains and formed the dry land; whose hands shaped us out of the dust of the earth; who formed the soils and made this earth a place of beauty and abundance: **We give you thanks for the gift of the land. Create in us such a sense of wonder and delight in this and all your gifts that we receive them with gratitude, care for them with love, and generously share them with all your creatures, to the honor and glory of your holy name. Amen.**

HYMN OF PRAISE *This is the Feast* ELW pg. 140

GOD SPEAKS TO US THROUGH A LIVING WORD

CHILDREN'S MESSAGE

Lisa Sampson

Noisy Offering is collected now; people of all ages invited to participate!

FIRST READING

1 John 3:16-24

GOSPEL VERSE

Alleluia

ELW Setting 3

Al - le - lu - ia. Lord, to whom shall we go? You have the
words of e - ter - nal life. Al - le - lu - ia. Al - le - lu - ia.

GOSPEL

John 10:11-18

(before) The Holy Gospel according to John, chapter 10.

Glory to you, O Lord.

(after) This is the Gospel of the Lord.

Praise to you, O Christ.

SERMON

Pastor Reed

HYMN OF THE DAY

As Rivers Flow from a Distant Spring

ACS 1046

1 As riv - ers flow from a dis - tant spring
2 As trees rise up from the for - est floor
3 As woods make shel - ter with - in its shade
4 So let us praise you, Cre - a - tor God,
to quench our thirst and feed the earth,
by roots that feed each limb a - bove,
for beasts to feed and birds to nest,
for worlds that wit - ness to your care,
so let our lives flow from you, our Source,
so let our lives rise in praise to you
so let our lives be a shel - tered space,
that show your pres - ence in ev - 'ry place,
to coun - ter death and nur - ture birth.
from hearts we root in your deep love.
a ref - uge for the worn to rest.
your glo - ry shin - ing ev - 'ry - where.

Hymnal Notes

ELW stands for **Evangelical Lutheran Worship**, the red worship book in the pew racks.

Page numbers (pg. 227) indicate pages in the front of the hymnal.

Hymn numbers (ELW #879) indicate hymns in the back of the hymnal.

ACS stands for All Creation Sings, which is the newest hymnal in the ELCA. We do not have these hymnals in our worship space, so the music is printed in the bulletin.

LITANY FOR THE EARTH

Adapted from Fran Pratt

God, we lament the destruction that has been done,
That we have permitted to be done;
By our silence and inaction,
And by our direct action
To the Earth – your Creation.
Forgive us, O God.

Even now we realize that our home
Is suffering,
Its inhabitants are suffering,
From lack of clean air and water,
Lack of life-giving nourishment,
Lack of safe habitat.

Help us to become aware
Of the needs of communities,
Of the needs of generations to come,
Of the needs of creatures and lands.

Arouse in us a new compassion,
A new willingness to change,
A new understanding of the connectedness of all things,
And a new appreciation of the gift that is Earth, our home. Amen.

PRAYERS OF THE PEOPLE

Loving and merciful God, **bring new life.**

SHARING OF PEACE

May the peace of the Lord be with you all. **And also with you.**

ANNOUNCEMENTS | INVITATION TO GENEROSITY

OFFERING PRAYER

Let us pray,
God of goodness and growth, all creation is yours, and
your faithfulness is sure. Word and water, wine and bread: these are
signs of your abundant grace. **Receive the gifts we bring, and nourish
us to proclaim your abiding love in our communities and in our world,
through Jesus Christ, our strength and our song. Amen.**

**We give thanks for all
expressions of
generosity** given in
response to our
generous God.

The offering plate is
on the table outside
of the worship
space.

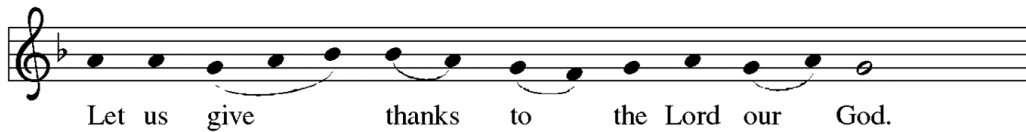
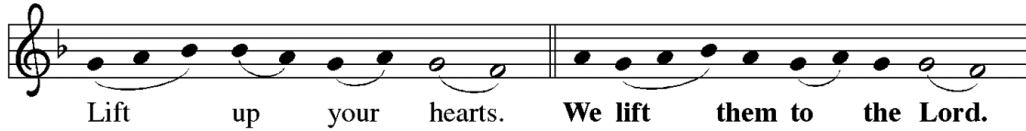
**Use the QR code
below** if you wish to
give online.



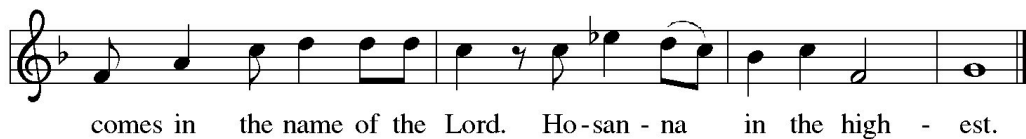
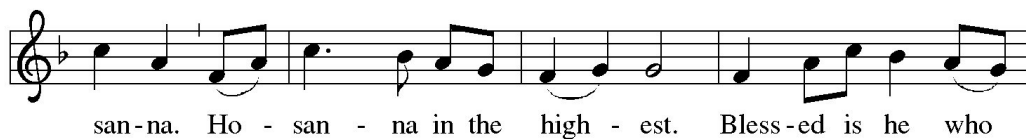
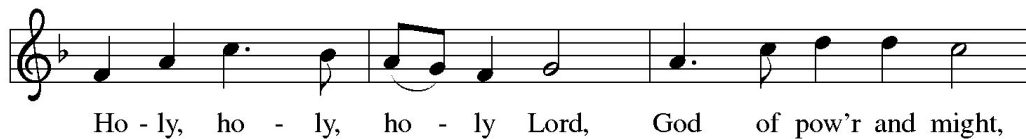
Scan me

GOD INVITES US TO THE TABLE

GREAT THANKSGIVING



It is indeed right, our duty and our joy... we praise your name and join their unending hymn:



EUCCHARISTIC PRAYER AND WORDS OF INSTITUTION

LORD'S PRAYER

Our Father in heaven, hallowed be your name, your kingdom come, your will be done, on earth as it is in heaven. Give us today our daily bread. Forgive us our sins, as we forgive those who sin against us. Save us from the time of trial and deliver us from evil. For the kingdom, the power, and the glory are yours, now and forever. Amen.

Holy Communion is celebrated at every service, for Jesus says to his friends, "Do this in remembrance of me."

At Christ's table, all are welcome, no exceptions. Here, we receive the forgiveness of sins and the promise of new life in God.

Gluten-free wafers are on the small table in the center aisle. Grape juice is in the center ring of cups.

Children are welcome to commune at their parents' discretion. Anyone can come forward for a blessing.

If you wish to receive communion but are unable to come forward, please inform an usher, and a server will bring the meal to you.

COMMUNION MUSIC

Lamb of God
I Come to Your Table
For the Beauty of the Earth
This Is My Father's World

Setting 3 pg. 146
Grace Choir
ELW #879
ELW #824

BLESSING AND PRAYER AFTER COMMUNION

The body and blood of our Lord Jesus Christ strengthen you and keep you in his grace. **Amen.**

Let us pray,

Life-giving God, in the mystery of Christ's death and resurrection you send light to conquer darkness, water to give new life, and the bread of heaven to nourish your people. **Send us forth as witnesses to Jesus' resurrection that we may show your glory to all the world; through the same Jesus Christ, our risen Lord. Amen.**

GOD SENDS US TO LOVE AND SERVE THE WORLD

All children are invited to walk out with the worship leaders during the last verse of the sending hymn to lead the words of dismissal.

SENDING HYMN

Go to the World

ACS 991 v1,3



1 Go to the world! Go in - to all the earth.
2 Go to the world! Go in - to ev - 'ry place.
3 Go to the world! Go strug - gle, bless, and pray;
4 "Go to the world! Go as the ones I send,



Go preach the cross where Christ re - news life's worth,
Go live the word of God's re - deem - ing grace.
the nights of tears give way to joy - ous day.
for I am with you till the age shall end,



bap - tiz - ing as the sign of our re - birth.
Go seek God's pres - ence in each time and space.
As ser - vant church, you fol - low Christ's own way.
when all the hosts of glo - ry cry, A - men!"



Al - le - lu - ia. Al - le - lu - ia.

BENEDICTION AND SENDING

In the name of almighty God, Father, † Son, and Holy Spirit, Mother of us all, **Amen.**

Go in peace and serve the Lord. **Thanks be to God!**

POSTLUDE

Earth and All Stars

Burkhardt

GRACE NEWS & NOTES

SUNDAY FORUM

Today - Green Team presents on Creation Care (*Celebrate Earth Day and learn more about how you can make a difference.*)

April 28 - Boiler Replacement Task Force presents sustainable options for repairs/replacements

May 5 - The Link/C.O.R.E. presentation

CREATED TO BE: VACATION BIBLE SCHOOL

Registration information for the June Vacation Bible School is at graceofav.org/kids-events.

GRACE LUTHERAN DISCOVERY CENTER ENROLLMENT DISCOUNT

Our new preschool partnership is open for enrollment! Visit ladcfamilies.org/locations.

LADC is currently offering a \$1000 tuition discount for all fall enrollments!

PRAYER SHAWL & BAPTISMAL BLANKET MEETING

Wednesday, April 24, 1:00p | Alpha Omega Room

All are invited to gather on the fourth Wednesday of every month to knit/crochet prayer shawls and baptismal blankets. A great way to socialize for an hour or two, and support the ministry!

SCONE SALE

Support the Racial Justice Ministry with your scone purchase! You are invited to pre-order now and pick up your scones on Sunday, May 12, after worship. The order form is posted at graceofav.org/news-and-announcements. You can also order on Sunday mornings with cash or check.

CARD MINISTRY STAMP DONATION

Our Care Card Ministry is growing! We were blessed with many card donations this past week! Thank you! We could always use stamps (packs and singles) if you would like to share those. Please place in the basket in the narthex.

ADULT BIBLE STUDY: REVELATION

Thursdays, 9:30a through May 9 | Friendship Hall

SALT SPEAKER SERIES

Seniors Learning Together is a coalition of churches in Dakota County. Every Monday through May 13, they offer four speakers a morning. Two of the options on Monday, April 22, are Dr. Kenneth Blumenfeld addressing Minnesota's changing climate, and Sheri and Peg Brenden discussing Title IX. More information at risensavior.org/salt.

MN VALLEY WOMEN'S CHORALE CONCERT

April 27 and 28, 7:30p at Grace | Buy tickets at mvwcsings.org/tickets.

GRACE Q1 FINANCIAL UPDATE

From Congregational Treasurer Elizabeth Lee

In January, the congregation approved an annual budget with a \$200,000 deficit. With our actual offerings and lower expenses, we operated at a deficit of \$60,000 for our first quarter.

In the first quarter, we budgeted \$236,770 of offering. Our actual offering was \$235,020, resulting in a shortfall of \$1,750.

Our actual expenses were \$295,686, which is about \$13,000 favorable to our budget of \$310,331. The lower expenses were largely due to the timing of the website redesign, and we anticipate these expenses to be incurred later this year.

CHURCH CALENDAR

GRACE STAFF

PASTORS

Sarah Rohde
Reed Fowler

FAITH FORMATION DIRECTOR

Lisa Sampson

CHURCH OPER. DIRECTOR

Lisa Wolf

CHOIR & BELL DIRECTOR

Steve Boehlke

ORGANIST

Sheryl Vande Kamp

CUSTODIAN

Payton Henderson

BUILDING/AV

Eric Rasmus

OFFICE ADMIN

Mary Culbertson

OFFICE HOURS

Monday - Thursday
9:00a - 3:00p

SAVE THE DATE!

Shared Leadership
Meeting
Tuesday, May 14, 6:15p

Sunday, Apr 21

9:15a Nursery is open
9:30a Worship
9:30a Confirmation Monthly Meet
10:30a Fellowship
10:40a Forum: Care Creation
10:40a The Neighborhood is open
7:00p Troop 298 Mtg / KH

Monday, Apr 22

Tuesday, Apr 23

6:15p All-Committee Mtg Night / FH
7:00p Racial Justice Team Mtg / AO

Wednesday, Apr 24

1:00p Al-Anon / Bonhoeffer
1:00p Prayer Shawl & Baptismal
Blanket Gathering / AO
5:30p 60th Anniversary Mtg / FH

Thursday, Apr 25

9:30a Bible Study: Revelation / FH
4:00p Grandparents HH / Zoom
6:30p Survivor Resources / Bonh

Friday, Apr 26

6:00p Singles Living Alone / Zoom
7:30p AA / Alpha Omega
7:30p MN Valley Women's
Chorale Concert / Sanct

Saturday, Apr 27

7:30p MN Valley Women's
Chorale Concert / Sanct

Sunday, Apr 21

9:30a Worship
Nursery, Kids Connect, The
Neighborhood, Fellowship,
and Forum

PRAYER AND CARE

PRAYERS OF THE COMMUNITY

Pray for healing and wholeness for Linda, Dick, Bev, Phil, Larry, and all who are sick, lonely, undergoing medical treatment, and grieving.

Pray for our partner congregation, Mensajeros de Cristo Lutheran Church of Guatemala.

Fill out a Prayer Card and place the card in the offering plate or submit your prayer request at graceofav.org/prayerrequests.

Contact Pastor Reed (r.fowler@graceofav.org or 952-207-9547) to be part of the ministry of prayer surrounding our members and community, or if you are in need of a home/hospital visit.

YOU ARE WELCOME HERE

We at Grace Lutheran Church are committed to being an affirming, loving and welcoming community of faith for all people. We believe the gospel is God's gift to be shared unconditionally regardless of age, ethnicity, race, national origin, family configuration or relationship status, physical or mental ability, socio-economic status, sexual orientation, gender identity or expression. Although our world can often be an unloving and alienating place, we rejoice in the diversity that has nurtured, enriched and challenged the life and ministry we share. We are committed to equity and inclusion, to the work of anti-racism, and advocating for marginalized groups and peoples. All are welcome to participate fully in the community of Grace Lutheran Church. Following the example of Christ, this congregation welcomes you exactly as you are.

Adopted Nov.13, 2016 Revised and Reaffirmed Oct. 20, 2021



*Grace holds a CCLI,
CVLI, OneLicense,
and Augsburg Fortress
Liturgies License.*

*Additional resources:
Litany by Fran Pratt
I Come to Your Table
arr. by Faye Lopez*